



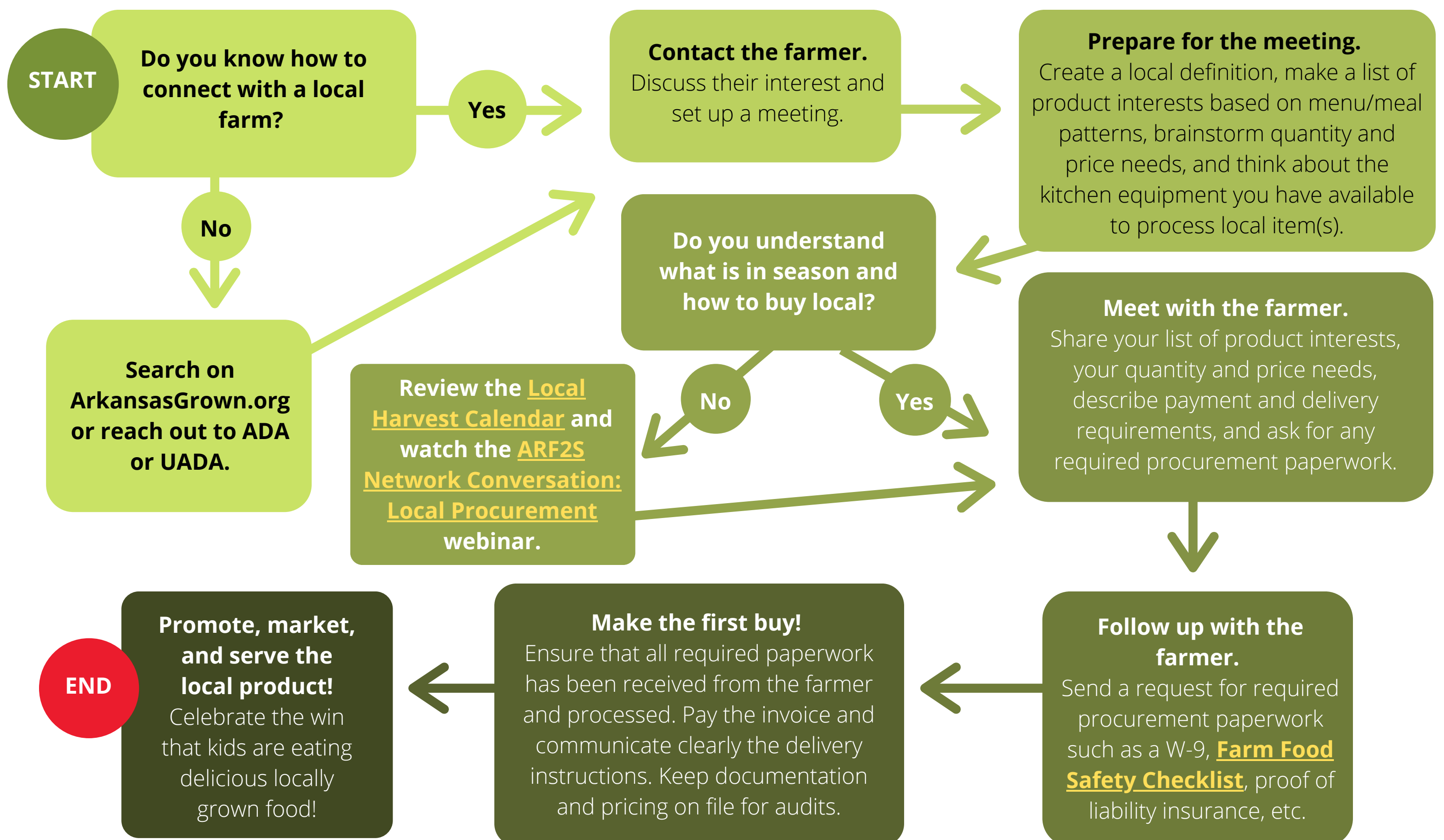
**ARKANSAS**  
**Farm to School**

# Child Nutrition Flowchart: Buying Local

Are you a school or school district that is interested in buying local? The following flowchart provides a step-by-step recommendation on how to build a connection and initiate potential sales with a local farm.

For additional help and support you may contact:

- Jessica Chapman, Arkansas Department of Agriculture, [jessica.chapman@agriculture.arkansas.gov](mailto:jessica.chapman@agriculture.arkansas.gov), (501) 251-3019
- Rip Weaver, University of Arkansas System Division of Agriculture (UADA), [rweaver@uada.edu](mailto:rweaver@uada.edu), (501) 671-2182



For more information and to sign up for the newsletter, visit [arfarmtoschool.org](http://arfarmtoschool.org).

