



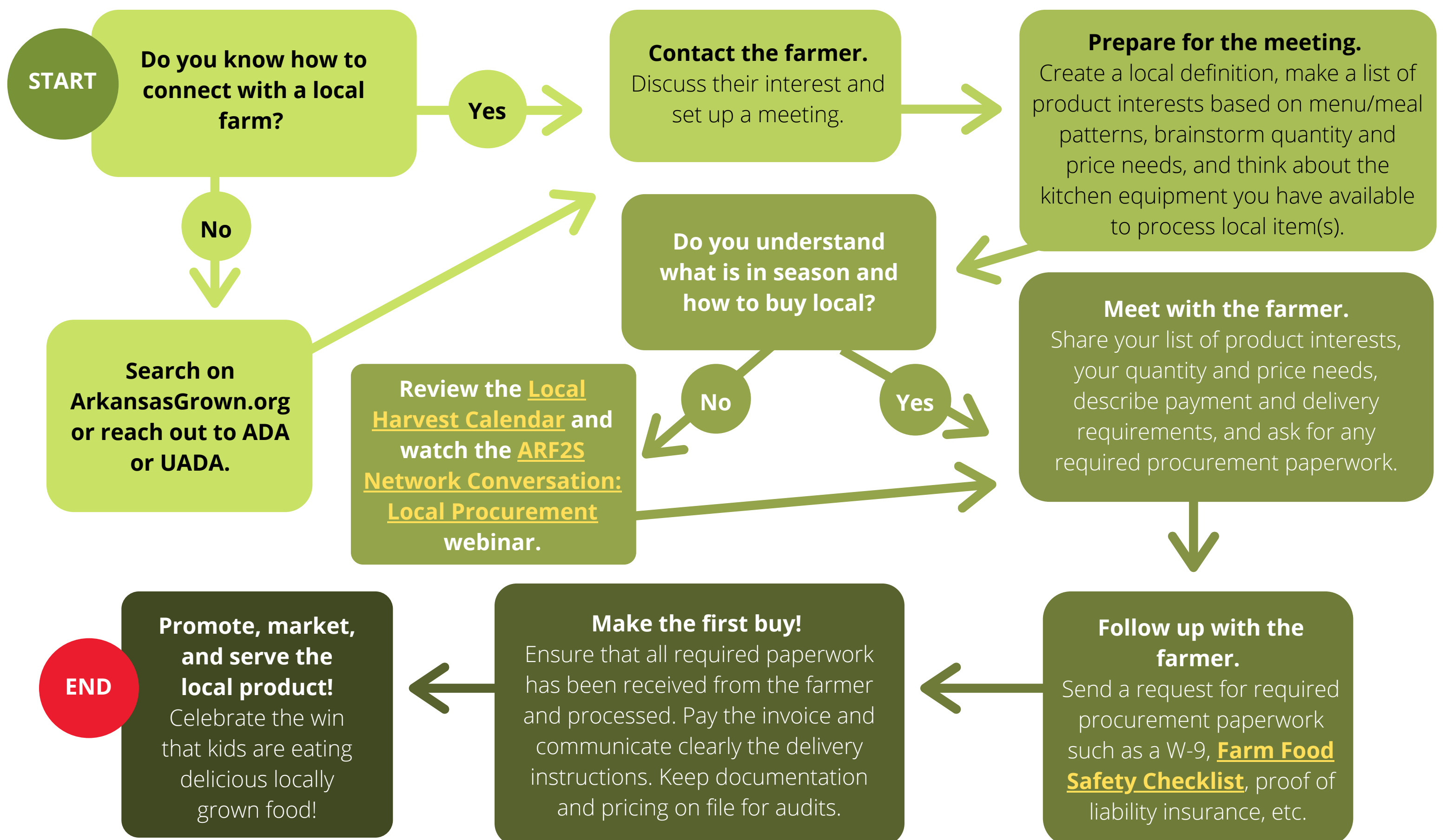
ARKANSAS
Farm to School

Child Nutrition Flowchart: Buying Local

Are you a school or school district that is interested in buying local? The following flowchart provides a step-by-step recommendation on how to build a connection and initiate potential sales with a local farm.

For additional help and support you may contact:

- Lindsey Cartwright, Arkansas Department of Agriculture, lindsey.cartwright@agriculture.arkansas.gov, (501) 442-5710
- Rip Weaver, University of Arkansas System Division of Agriculture (UADA), rweaver@uada.edu, (501) 671-2182



For more information and to sign up for the newsletter, visit arfarmtoschool.org.

