

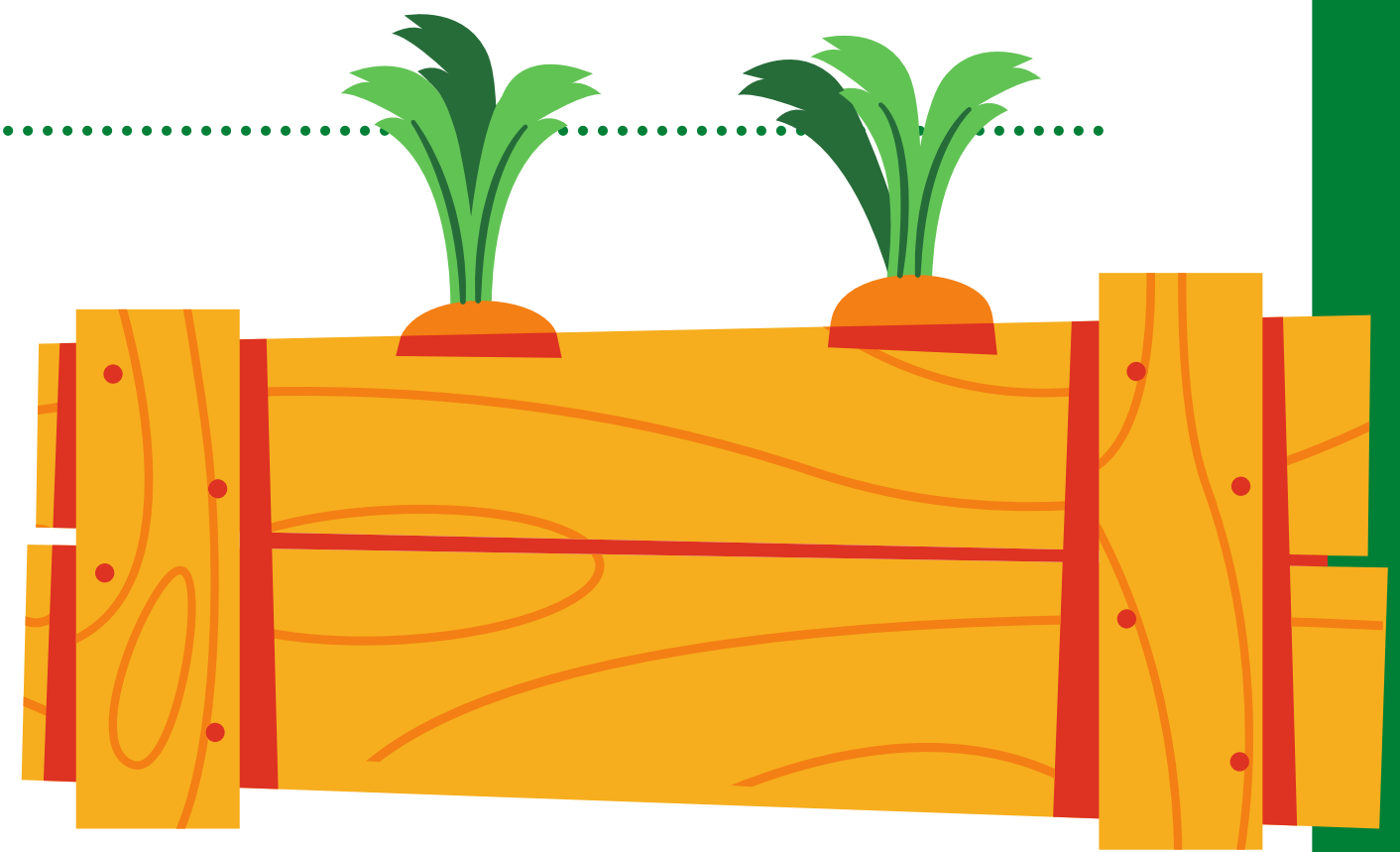


## ARKANSAS FarmtoSchool

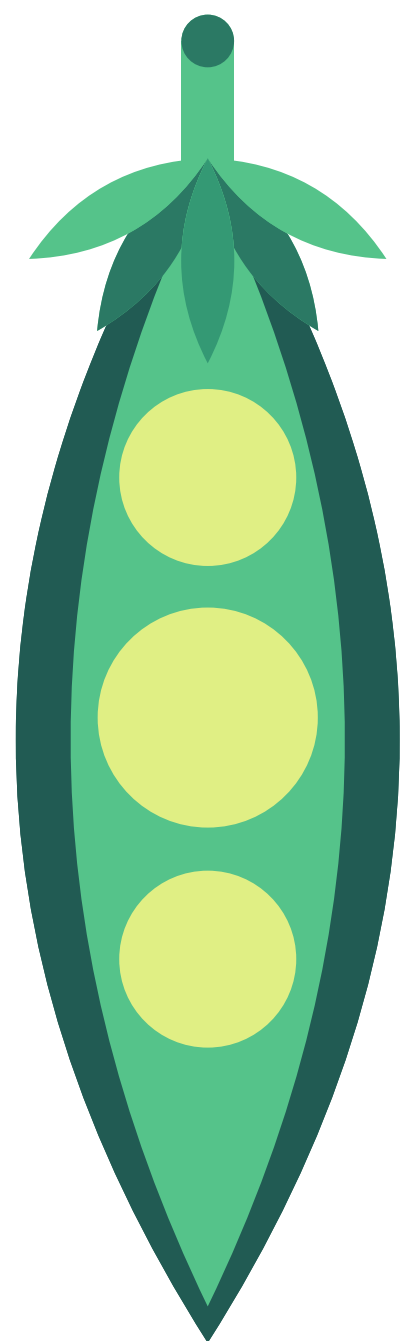
# School Garden Grants

Grants listed below help start or expand school gardens. The grants vary in amount and are arranged by the season in which the application is due. Arkansas specific grants are listed with a ☆.

For additional help and support in school garden development, you may contact Erica Benoit, State School Garden Manager, at the Arkansas Department of Agriculture, [erica.benoit@agriculture.arkansas.gov](mailto:erica.benoit@agriculture.arkansas.gov), (501) 295-8856.



### FALL



☆Arkansas Environmental Education Association (AEEA) Mini-Grant Up to \$500

AEEA's Environmental Education Mini-Grant Program is designed to support, enhance, and expand the implementation of environmental education throughout the state of Arkansas by classroom teachers and non-formal educators and organizers. AEEA funds projects that include, but are not limited to, direct hands-on education programs, educator professional development, and community engagement events.

☆Arkansas School Garden Grant Program \$500

The Arkansas Department of Agriculture established the Arkansas School Garden Grant Program to help schools start or expand gardens on school grounds. The grant program was developed with funding from the U.S. Department of Agriculture's (USDA) Specialty Crop Block Grant Program to increase production of specialty crops in school gardens. Specialty crops as defined by the USDA are fruits, vegetables, tree nuts, dried fruits, horticulture, and nursery crops.

☆Arkansas Game and Fish Wildlife Conservation Education Grant Program \$ Varies

The Arkansas Game and Fish Wildlife Conservation Education Grant Program is a partnership between the Division of Rural Services and the Arkansas Game and Fish Commission that converts fine money assessed from infractions of state laws protecting Arkansas game and fish, into grant funds for school conservation education programs. Any school or conservation district in Arkansas, regardless of size or population, is eligible.

American Heart Association Teaching Gardens \$2,500

The American Heart Association funds schools and educational facilities that are working to connect children to the garden, supporting health, nutrition, and environmental stewardship. Through this grant program, they hope to build strong communities who commit to growing healthy kids. Both new and established school garden programs are encouraged to apply.

Annie's Grants for Gardens \$3,000

Annie's believes that showing future generations how sustainable food is grown can change their lives. Annie's accepts applications from edible school gardens at non-profit private and public K-12 schools and districts as well as non-profit organizations that support a public or a non-profit private school. Preschools and homeschools are ineligible for the grant.

☆Shade Trees on Playgrounds (STOP)\_Trees

The Shade Trees on Playgrounds program is sponsored by the Arkansas Department of Agriculture Forestry Division's Urban & Community Forestry program. Applicants may be any public or private Arkansas school serving grades pre-K through 12, or a non-traditional educational facility such as a juvenile detention center, residential child care institution, or long-term care facility that has a playground in need of shaded areas.

The Bee Grant Program \$1,500

Powered by a partnership with the Whole Kids Foundation, the Bee Grant Program guides K-12 schools and nonprofits through the process of installing and maintaining their own educational hives and pollinator curriculum. All grants include an experience box filled with classroom resources and curriculum, guidance and support to build your Bee Program, assistance in establishing a Beekeeper partnership to help care for the hive, and connections to the growing "hive" of bee advocates around the world.

Budding Botanist \$2,250 or \$1,250

The Budding Botanist grant helps our youngest citizens learn about plants, explore their world, and inspire them to take care of the life they discover in their local ecosystems. Any public school, charter school, or private school serving students in grades K-12 that can demonstrate that at least 40% of their student population would qualify for free or reduced price meals is eligible to apply. Applicants must be planning a new or expanding an existing school garden program designed to teach students about environmental sustainability and the importance of biodiversity.

Captain Planet Foundation Project Learning Garden Contest \$3,000

Through a partnership with Harps, DOLE Packaged Foods, and the Captain Planet Foundation, the Project Learning Garden Program provides schools and educators with materials and support to create an outdoor learning space using STEAM to engage students' curiosity about the world around them through immersive

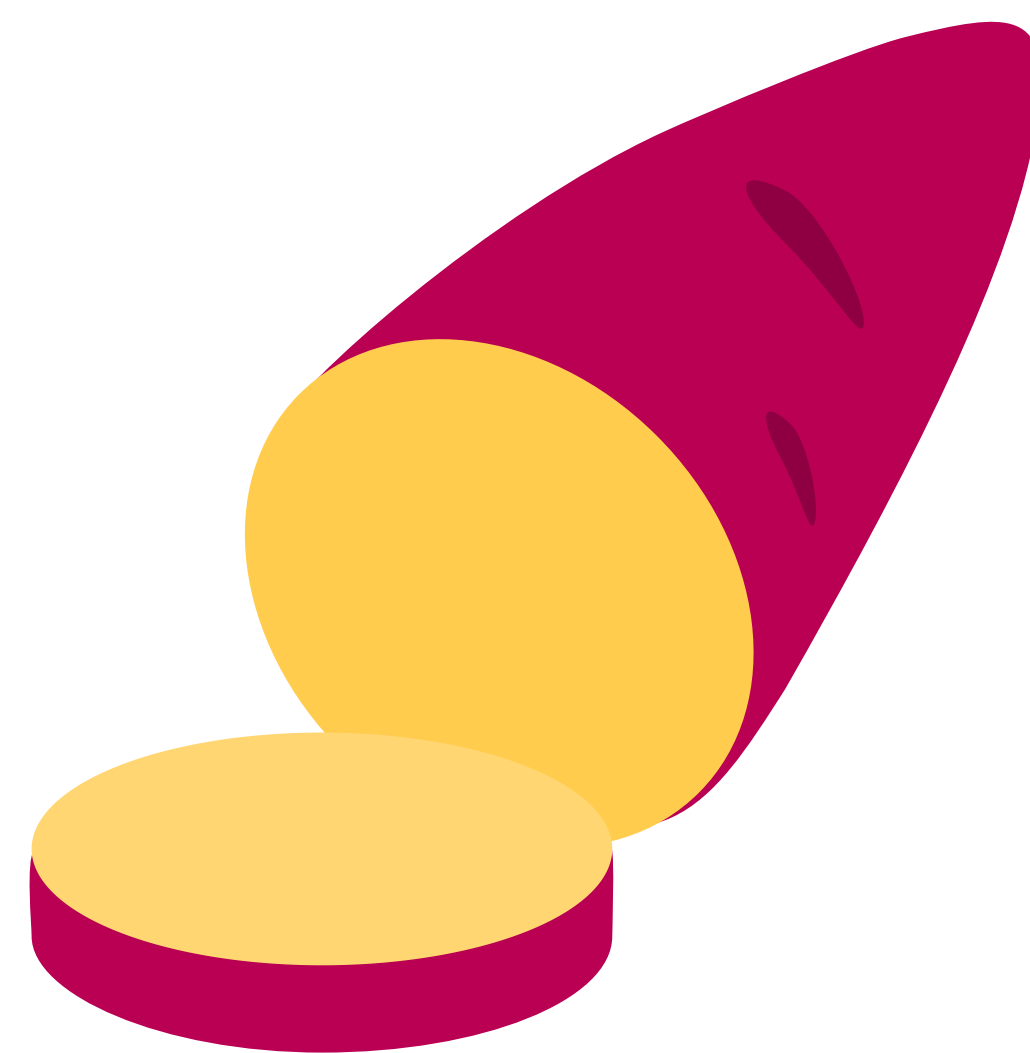


learning experiences. The competition is open to any state-accredited elementary school (K-5) located in the states of Arkansas, Kansas, Missouri, or Oklahoma. Schools must be within 10 miles of a Harps store.

☆Innovative Solutions for Educational Partnerships (ISEP) Grant

\$1,000

ISEP awards up to 25 grants each year to fund a number of projects, including school/community garden start-up and expansion. Because of the school districts that work with ISEP, over 200 grants have been awarded to over 120 Arkansas school districts since 2011.



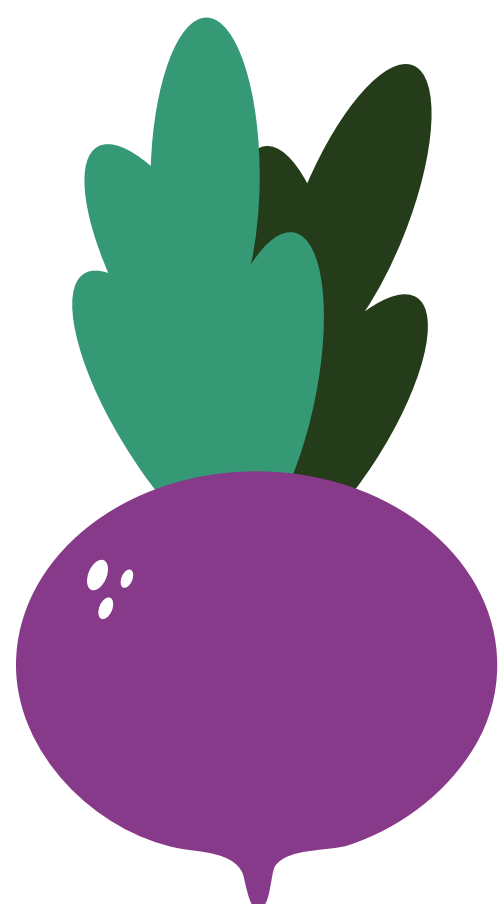
National Head Start Association Gro More Good Garden Grants \$2,500-\$5,000

The National Head Start Association and The Scotts Miracle-Gro Foundation are joining forces to address a critical issue facing young children. Through the Gro More Good Garden Grants initiative, they will work with Head Start programs across the country to teach children, families, and communities how to grow their own fresh produce—for life. The multi-year initiative will make garden grants, garden kits, educational curriculum, and garden training available to all Head Start programs with the goal of creating more edible gardens for young children and their families.

United States Department of Agriculture (USDA) Farm to School Grant Varies

On an annual basis, USDA awards competitive Farm to School grants to be used for training, supporting operations, planning, purchasing equipment, developing school gardens, developing partnerships, and implementing farm to school programs. Through the FY 2018 Omnibus Bill, the Farm to School Grant Program was appropriated additional funding. In FY 2019 and FY 2020, the Office of Community Food Systems (OCFS) released approximately \$7.5 million to help reach more communities seeking to incorporate local products into school meal programs, integrate agricultural education into the classroom, and cultivate and expand school gardens.

## WINTER



☆Arkansas Farm Bureau Outdoor Classroom Garden Mini-Grant Program Up to \$500

The Outdoor Classroom Garden Mini-Grant Program is designed to show that agriculture is an integral part of our everyday environment. Farms, wildlife, forestry, people, and cities are all interrelated with agriculture. As most of Arkansas's wildlife resides on and feeds off of private property, including farms and timberlands, the gardens can demonstrate the connection between agriculture, food, fiber, conservation, wildlife, and the urban environment. Schools, FFA Chapters, and 4-H Clubs with a minimum of 100 students for average daily attendance are eligible to apply.

☆Arkansas Flower and Garden Show Greening of Arkansas Grant Program Up to \$2,500

The Arkansas Flower and Garden Show provides funding for community beautification projects through the Greening of Arkansas Grant Program. Grants are awarded to non-profit and civic groups for beautification projects on public land.

☆Blue & You Foundation Mini-Grant \$1,000

Blue & You Foundation offers \$1,000 mini-grants to support health improvement projects in Arkansas. Any health related activity is eligible. Applications for mini-grants will be accepted January 1- February 15.

Carton2Garden Contest \$5,000

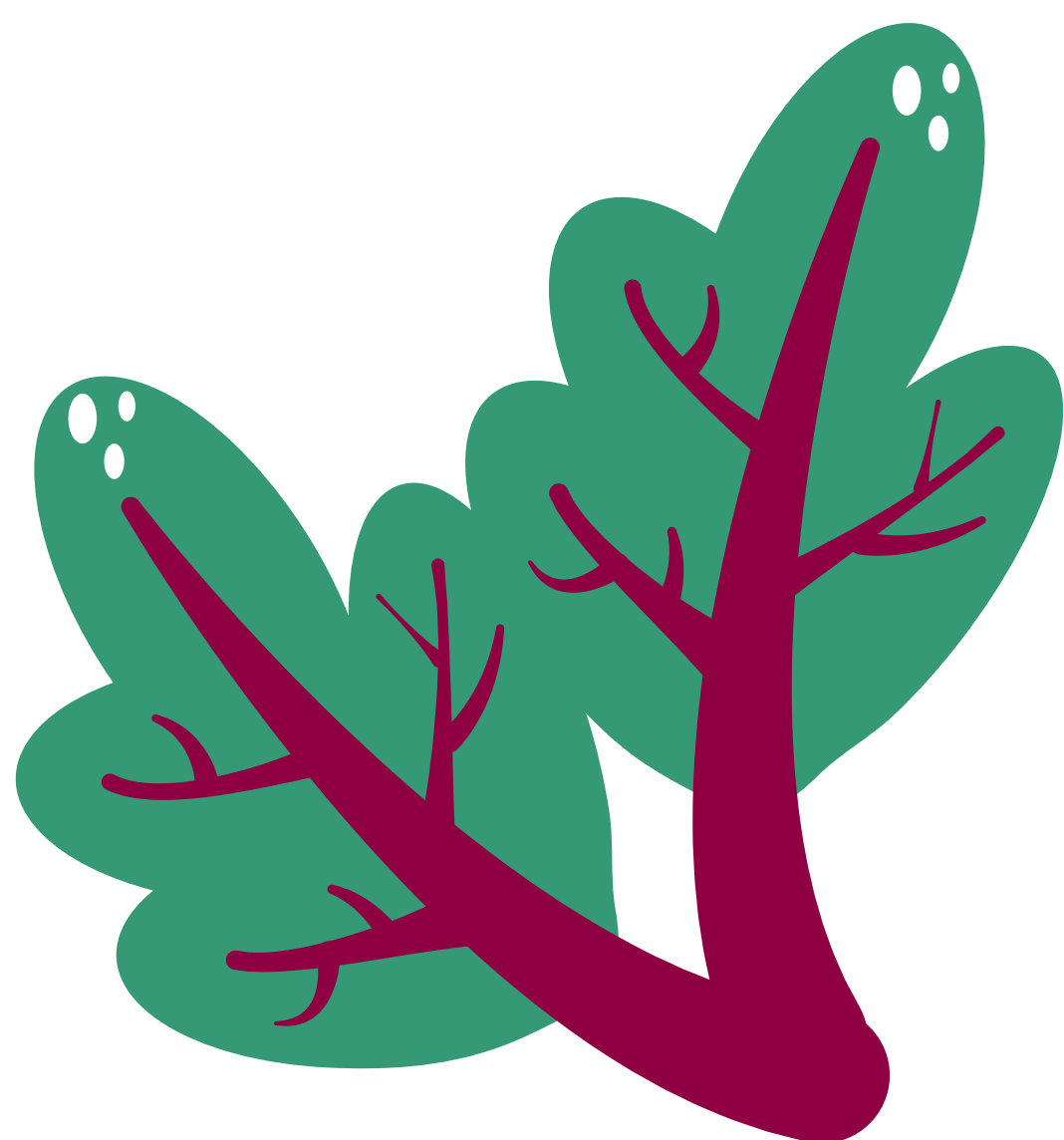
The Carton2Garden Contest invites educators to show their students' creativity by repurposing milk and juice cartons from the school cafeteria to build or enhance their school garden. The best use of cartons in a school garden gives schools the chance to win one of 15 prizes with a grand prize valued at \$5,000.

Gro More Good Grassroots Grant \$1,000

The Gro More Good Grassroots Grant presented by The Scotts Miracle-Gro Foundation and KidsGardening is designed to bring the life-enhancing benefits of gardens to communities across the United States. Grants will be awarded to schools and non-profit groups across the country for impactful, youth-focused garden projects.

KidsGardening Youth Garden Grant \$250 plus gardening tools and supplies

The Youth Garden Grant supports school and youth educational garden projects that enhance the quality of life for students and their communities. Any nonprofit organization, public or private school, or youth program in the United States (US) or US Territories planning a new garden program or expanding an established one that serves at least 15 youth between the ages of 3 and 18 is eligible to apply.



Sodexo Stop Hunger Foundation Youth Grants Up to \$500

The Sodexo Stop Hunger Foundation supports youth leaders ages 5-25 across the United States to turn their ideas into action and make an impact on the issue of childhood hunger. Grants fund youth-led community service or fundraising projects designed to address childhood hunger that take place in schools, colleges/universities, after-school programs, youth organizations, nonprofits, or faith-based organizations.

Whole Kids Foundation Garden Grant \$3,000

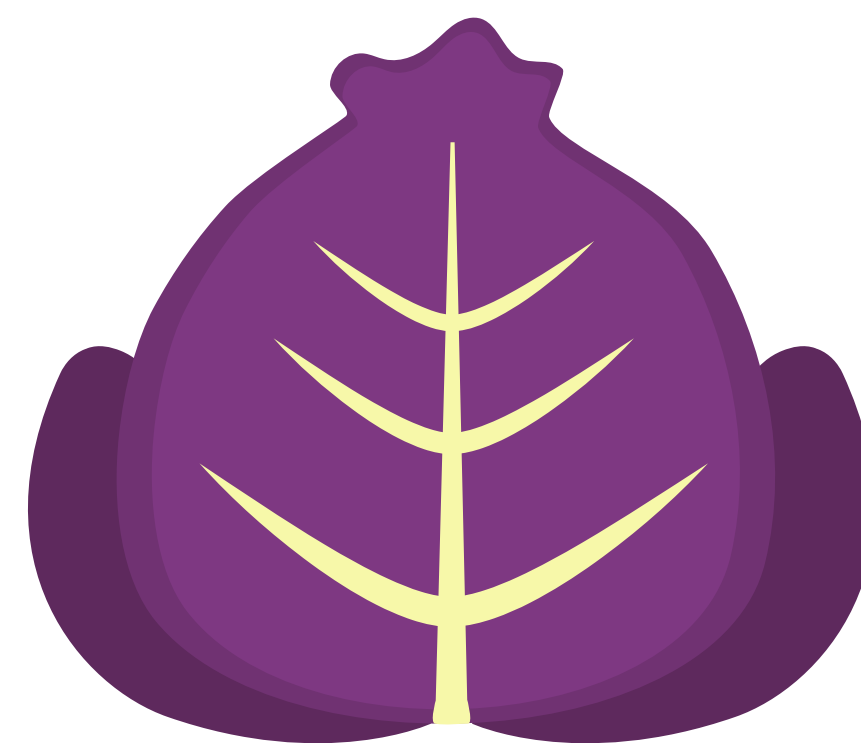
Through the Garden Grant program, schools and non-profit organizations turn outdoor spaces into powerful

hands-on learning gardens that connect kids with food, spark their curiosity, and support classroom curriculum. The program provides funding to support a new or existing edible educational garden at K-12 schools and non-profit organizations.

Whole Kids Foundation Get Schools Cooking Grant \$200,000

The Get School Cooking Grant was created to support medium-sized school districts who are eager to transform their school lunch programs from processed foods to scratch-cooked meals.

Get Schools Cooking will work with the selected districts through a technical assistance program that includes a workshop for food service directors, on-site assessment and on-site assessment debrief and strategic planning, along with peer-to-peer collaboration and access to a food service program Assistance Grant.



## **SPRING/SUMMER**

Action for Healthy Kids Game On Grants \$1,000 or \$2,500

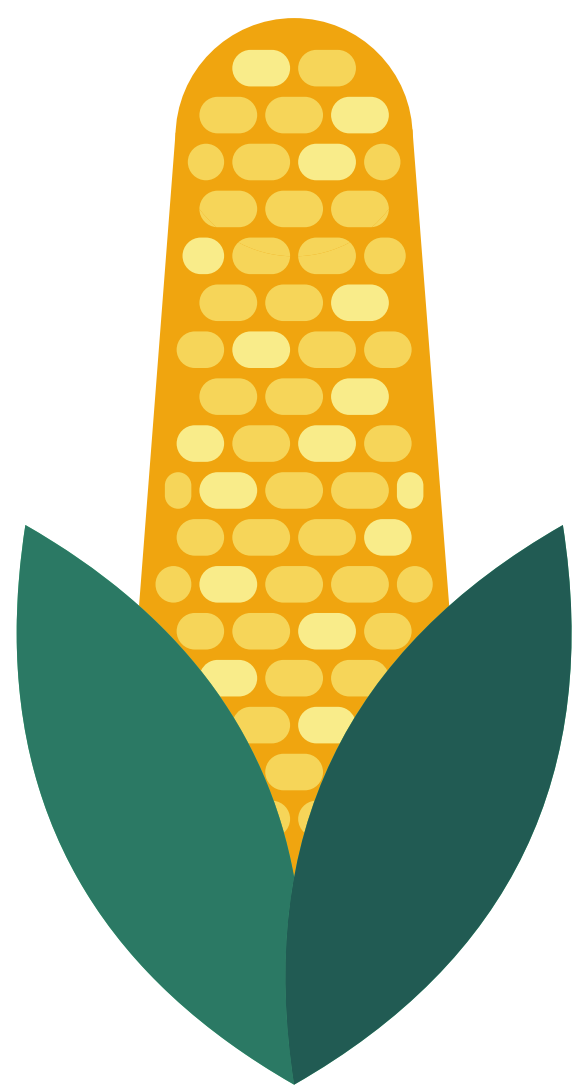
Action for Healthy Kids provides schools the resources for students to eat better, stay physically active, and be better prepared to learn. Their grant program, Game On Grants, supports physical activity and/or nutrition initiatives at schools.

☆Arkansas Grown School Garden of the Year Contest \$500-\$1,000

The Arkansas Grown School Garden of the Year Contest is sponsored by the Arkansas Department of Agriculture with funding provided by Farm Credit Associations of Arkansas. Applicants may be public and private K-12 schools, early care and education facilities, or alternative learning environments that had a school garden open during the previous school year, or any schools planning to start a garden in the following school year.

Bonnie Plants 3rd Grade Cabbage Program \$1,000 Student Scholarship

Bonnie provides free mega-cabbage plants to 3rd grade teachers who want to participate. Students grow the cabbages and submit pictures and measurements of their harvest to be considered for a \$1,000 scholarship.



☆Blue & You Foundation Grant \$5,000 and up

Blue & You Foundation's mission is to work together with others to create a state of better health for all Arkansans. They strategically focus grant funding on community-based solutions in the hopes it will nurture community health leadership, foster collaboration and innovation, and leverage financial, human, and community resources to produce measurable, positive impacts. Any program or project that positively affects the health of Arkansans can apply to receive funding.

☆Conway Regional Women's Council Teacher's Grant \$500

As a supporting organization of Conway Regional Health System, the Conway

Regional Women's Council is dedicated to the fight against childhood obesity in the community. The Teacher's Grant offers educators in the Conway Regional Service area the opportunity to impact the lives of their students by offering programs specifically designed to promote physical activity, good nutrition, and/or personal wellness. Eligible teachers may submit one application per school year.

Cox Charities \$ Varies

Cox's primary focus area is youth and education. All opportunities that further their goal of strengthening the social, economic, and educational infrastructure of the community will be considered for sponsorship. Applications are accepted in March and September.

Little Seeds Pollinator Pals Grant \$500

The Little Seeds Pollinator Pals Grant is designed to support youth garden programs interested in preserving and creating pollinator habitat to help rebuild declining pollinator populations. Programs will be awarded a check to support the development of new and expansion of existing pollinator gardens in their communities.

## YEAR ROUND

☆Apple Seeds, Inc Growing My Plate Stipends Varies

Growing My Plate is a collaboration between Apple Seeds, The Arkansas Hunger Relief Alliance, and Arkansas Children's Research Institute. Stipends are available to facilitators interested in leading Growing My Plate. This program empowers students with cooking skills, nutrition knowledge, and a desire to prepare healthy food. Students harvest produce from the gardens and prepare a simple, nutrition- and garden-based recipe each week. Training is provided to facilitators.

☆Arkansas Community Foundation Giving Tree Grants Varies

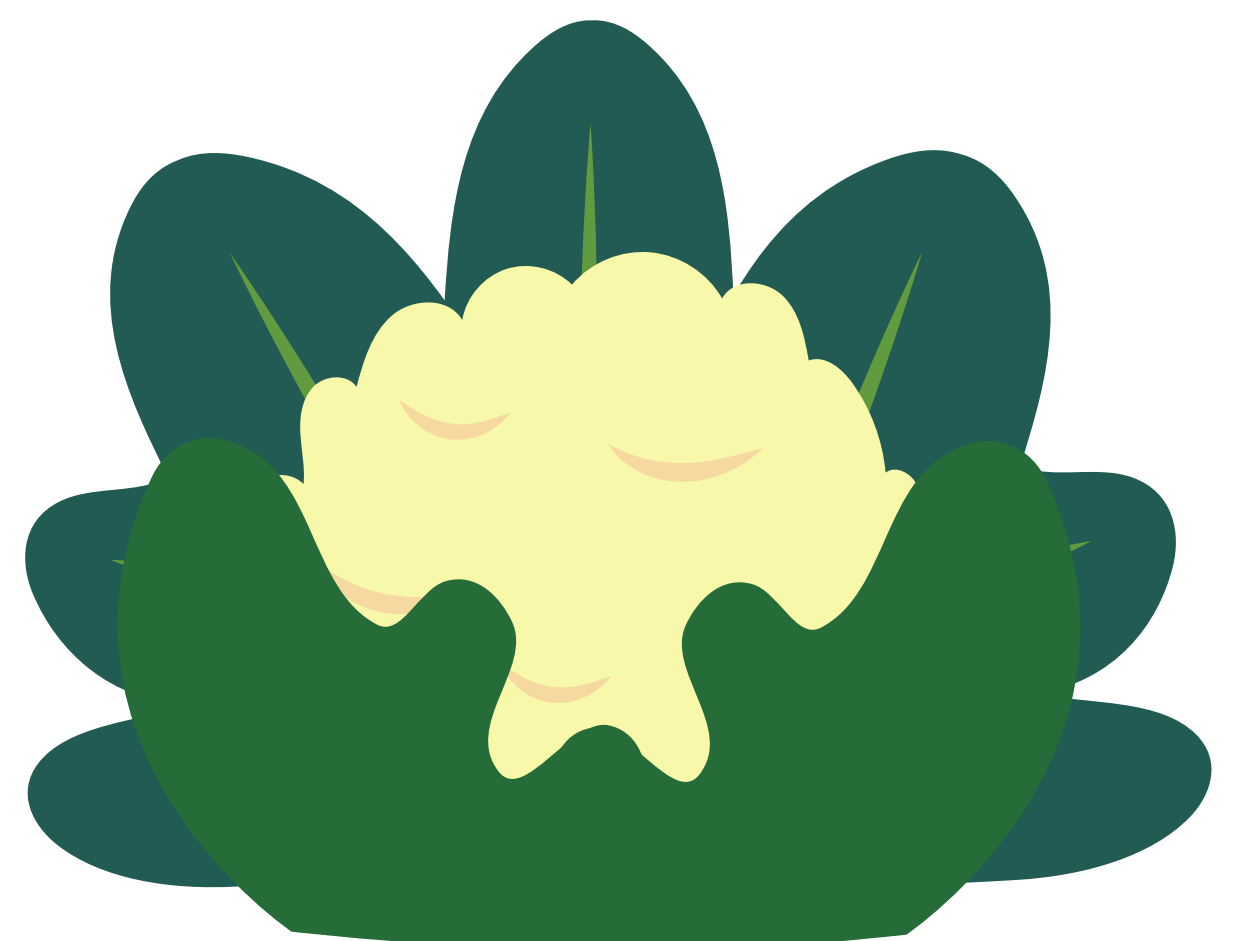
Arkansas Community Foundation has 29 affiliates throughout the state, and each affiliate offers Giving Tree grants at least once a year. Typically, these grants are available for a wide variety of charitable causes; sometimes, though, they'll choose to target a particular need (like hunger relief or childhood nutrition).

☆Arkansas Valley Electric Cooperative Roundup for Change Varies

Arkansas Valley rounds up utility bills of participating members to the next dollar, and donates the money to local charitable and educational projects. To qualify for funding, projects must generally be related to community service, low-income assistance, education youth programs, emergency energy assistance, or disaster relief.

Captain Planet Foundation Grants Varies

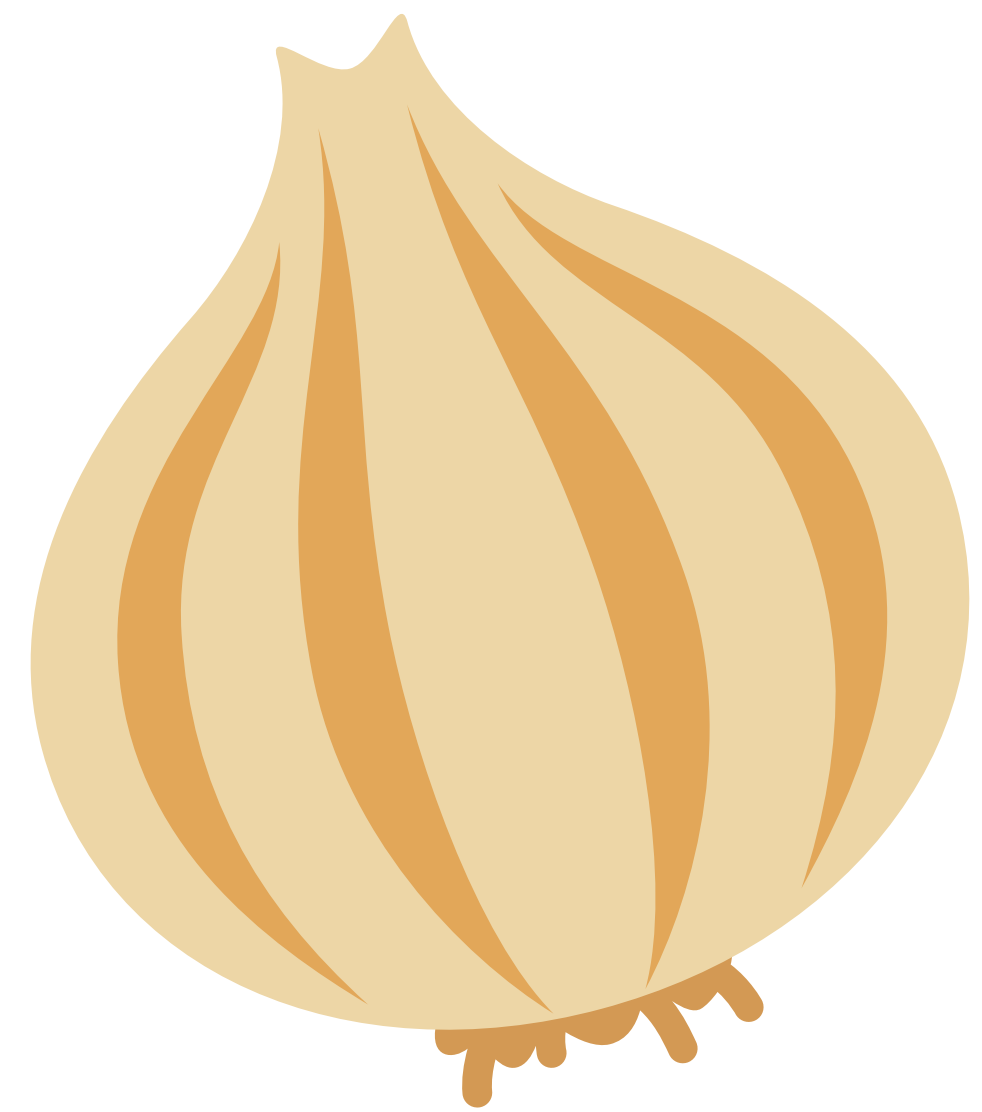
Captain Planet Foundation invests in high-quality, solution-based programs that embrace STEM learning and empower



youth to become local and global environmental change-makers. Educators, both K-12 classroom and informal, who are interested in receiving support for students to design and implement hands-on environmental solutions are eligible for project funding.

Clif Bar Family Foundation Small Grants Varies

Applications for the Small Grants program are reviewed three times a year; the deadlines are the 1st of February, June, and October. The program funds organizations and projects that protect Earth's beauty and bounty, create a robust, healthy food system, increase opportunities for outdoor activity, reduce environmental health hazards, and build stronger communities.



Community Impact Grants by Home Depot Foundation Up to \$5,000

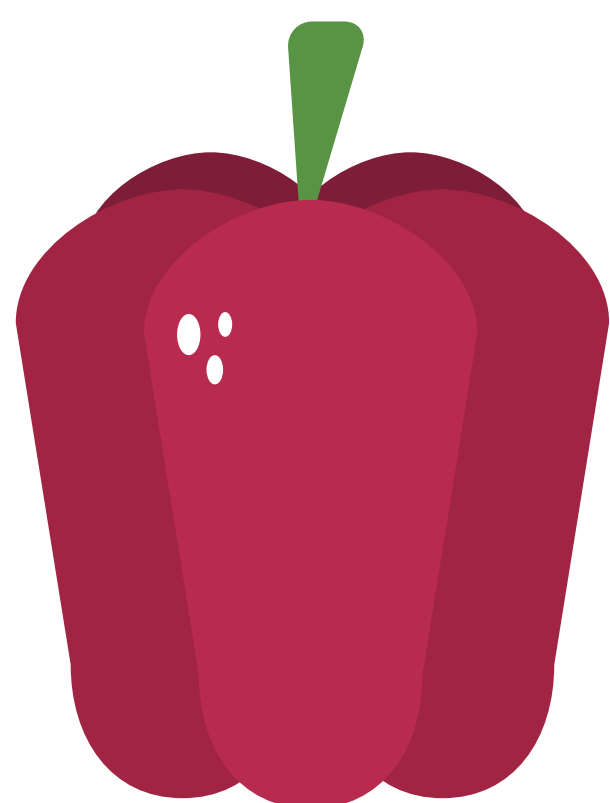
The Foundation offers grant awards up to \$5,000 to 501(c)(3) designated organizations (recognized and in good standing with the IRS for a minimum of one year) and tax-exempt public service agencies in the United States that are using the power of volunteers to improve the community. Grants are given in the form of The Home Depot gift cards for the purchase of tools, materials, or services and are required to be completed within six months of approval date.

☆Entergy Open Grants Varies

Entergy's Open Grants Program focuses on improving communities as a whole. Entergy looks for giving opportunities in the areas of arts and culture, education and workforce development, poverty solutions and social services, healthy families, and community improvement. Open Grant applications are accepted on an ongoing basis.

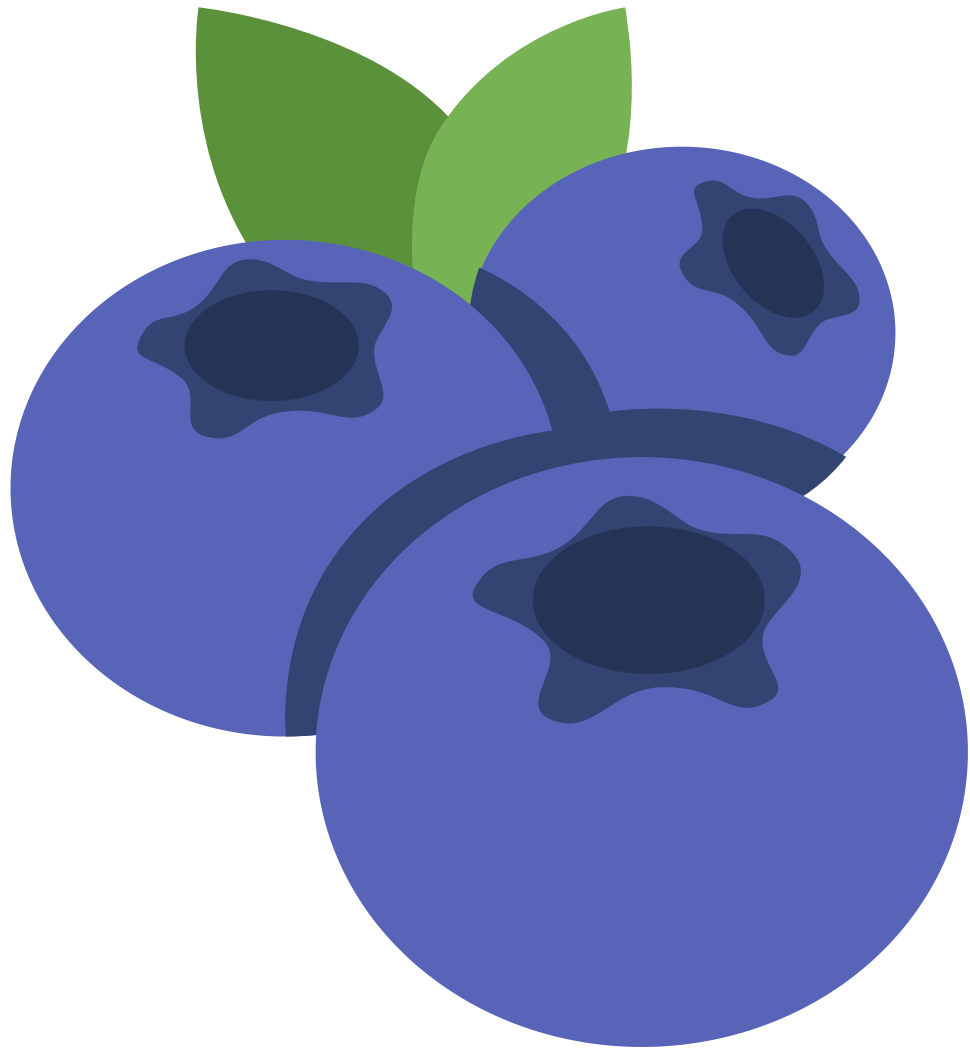
Fiskars Project Orange Thumb Grant Varies

Fiskars supports programs that celebrate innovation, education, and biodiversity. Their grants aim to make a real impact by supporting schools and community gardening initiatives across North America. Fiskars has grants available for organizations as a whole, as well as a specific program for teachers to receive monetary funding and tools for their classrooms.



Greenworks! Grants \$1,000

Project Learning Tree (PLT) offers annual GreenWorks! grants up to \$1,000 to schools and youth organizations for environmental service-learning projects that link classroom learning to the real world. To be eligible, applicants must have attended a PLT workshop, either in-person or online, that provides training, lesson plans, and other resources to help integrate these projects and environmental education into your curriculum or youth programs.



#### National Wildlife Federation Trees for Wildlife Trees

The National Wildlife Federation (NWF) offers free native trees for restoration projects and community events planned in coordination with local NWF partners.

#### ☆North Little Rock Fit 2 Live Grant \$5,000

The City of North Little Rock supports community gardens through the Fit 2 Live Community Garden Program, which makes \$40,000 per year available to support the establishment or improvement of community gardens and urban farms, with the goal of increasing access to fresh fruits and vegetables, physical activity, and neighborhood connections.

Community groups, faith-based organizations, and schools may request up to \$5,000 for garden construction materials, tools, and certain other expenses. The annual proposal deadlines are February 15 and August 15.

#### Regions Community Investments Varies

Regions Bank makes strategic and disciplined community investments in programs that seek to achieve three target outcomes: economic and community development, education and workforce readiness, and financial wellness. Eligible organizations focused on at least one of three strategic priorities are invited to submit a proposal.

#### Tractor Supply Company Grants for Growing Up to \$3,000

Available for FFA Chapters, this grant offers funding to schools for starting and expanding agricultural projects. This grant provides middle/high school FFA chapters with up to \$3,000 to support a service-learning project that spans an entire school year.

#### ☆Walmart Local Community Grants \$250-\$5,000

Walmart's local community grants are awarded through an open application process and provide funding directly from Walmart and Sam's Club facilities to local organizations in the United States. K-12 public or non-profit private schools, charter schools, non-profit organizations, government entities, and more are eligible to apply.

#### Whole Kids Foundation Salad Bar to Schools Grant Equipment grant

The Salad Bars to Schools grant program was developed with the mission of donating salad bars to United States schools to allow kids to have daily access to fresh fruits and vegetables. Applications are accepted year round.

.....  
For more information, and to sign up for the bi-weekly newsletter visit [arfarmtoschool.org](http://arfarmtoschool.org).

